



PRAHLADRAI DALMIA LIONS COLLEGE OF COMMERCE & ECONOMICS

Sunder Nagar, S.V. Road Malad (w), Mumbai 400064

ISO 9001:2015 Certified

D. T. V. C.
Oct-2022

Day-----01		SEAT NUMBER							
2022	X	10		1300	(E)				
ENGLISH (01)									
TIME: 2.30 Hrs.			(06 Pages)			Max. Marks: 50			

SECTION I: PROSE

(Reading for Comprehension, Language study, Summary Writing, Mind Mapping)

Q. 1 A. Read the extract and complete the activities given below:

(06)

Here was an old church, quaint and rambling and gabled. Through one violet-stained window a soft light glowed, where, no doubt, the organist loitered over the keys, making sure of his mastery of the coming Sabbath anthem. For there drifted out to Soapy's ears sweet music that caught and held him transfixed against the convolutions of the iron fence.

The moon was above, full and radiant; vehicles and pedestrians were few; sparrows twittered sleepily in the eaves or a little while the scene might have been a country churchyard. And the anthem that the organist played cemented Soapy to the iron fence, for he had known it well in the days when his life contained such things as mothers and roses and ambitions and friends and immaculate thoughts and collars.

The conjunction of Soapy's receptive state of mind and the influences about the old church brought a sudden and wonderful change in his soul. He viewed with rising horror the pit into which he had tumbled, the degraded days, unworthy desires, dead hopes, wrecked faculties and base motives that made up his existence.

And also, in a moment his heart responded thrillingly to this strange mood. A strong impulse moved him to battle with his desperate fact. He would pull himself out of the mire and would make a man of himself again; he would conquer the evil that had enslaved him. There was time; he was young yet; he would resurrect his old eager ambitions and pursue them without faltering. Those solemn but sweet organ notes had set up a revolution in him. Tomorrow he would go into the roaring downtown district and find work. A fur importer had once offered him a place as driver. He would be somebody in the world. He would ----

Soapy felt a hand laid - on arm. He looked quickly around into the impassive face of a policeman.

"What are you doin' here?" asked the officer.

"Nothin'," said Soapy.

"Then come along," said the policeman.

"Three months on the island," said the Magistrate in the Police Court the next morning.

A1. Complete the following web by writing the atmosphere of the church when Soapy reached near the church.



(2)

A2. Complete the following:

(2)

After listening to the sweet and solemn organ notes, soapy decides to:

(a)

(b)

A.3. Interpret the statement from the extract, "He would make a man of himself again".

(2)

B: Language study: (Non-textual Grammar)

B. 1. Transformation of sentence

(3)

(i). Women represent half the world's population, but contribute for less than fifty percent of economic activity. (Find out correct complex sentence from the given options and rewrite) (1)

a. As women represents half the world's population, they contribute for less than fifty percent of economic activity.

b. Women represent half the world's population, and contribute for less than fifty percent of economic activity.

c. Though women represent half the world's population, they contribute for less than fifty percent of economic activity.

d. Women represent half the world's population as well as contribute for less than fifty percent of economic activity.

ii. We need to provide greater access to credit to women to achieve greater economic independence. (Find out correct sentence where modal auxiliary showing 'compulsion' is used from the given options and rewrite) (1)

a. We can provide greater access to credit to women to achieve greater economic independence.

b. We will provide greater access to credit to women to achieve greater economic independence.

c. We should provide greater access to credit to women to achieve greater economic independence.

d. We must provide greater access to credit to women to achieve greater economic independence.

iii. "Go and wash your face," said the teacher. (Given below are four options, find out correct Indirect Speech of the given options and rewrite it) (1)

a. The teacher asked him/her to go and wash his/hers face.

b. The teacher advised him/her to go and wash his/hers face.

c. The teacher ordered him/her to go and wash his/hers face.

d. The teacher told him/her to go and wash his/hers face.

B. II. Spot the error and rewrite the correct sentence:

(1)

i. Sumed and Rahul were in no mood of talking.

Q.2 A. Read the extract and complete the activities given below:

(06)

The 21st century poses many challenges that require new ways of thinking. None of them is more important than the economic role of women in a quickly changing world. But women today remain blocked from contributing their true potential. This has a huge cost. In some countries, the per capita income is very low because women are not given equal opportunity. They are half the world's population. But their economic contribution is far less than 50%. We have to change this situation. For empowering women, I suggest three Ls – Learning, Labour and Leadership.

Education is the foundation on which any change is built. Learning helps women to help themselves and break free of the chains with which they are bound. This is more necessary in the developing world. In Africa, there is a common saying: "If you educate a boy, you train a man. If you educate a girl, you train a village."

Labour is the second step. Labour helps women to flourish and achieve their true potential. Unfortunately, today, even when women work, they are often limited to jobs where the pay, status and security are low. Globally, women earn only one third as much as men, even when they have similar education and similar jobs. One of our important ideas should be "equal pay for equal work". Researches show that removing the gender inequality in economic participation can bring an increase in the per capita income.

Women can be given more opportunities in the work place. There is a need to change our laws to ensure that property and inheritance laws do not discriminate against women. Education and healthcare for women should be encouraged. Women should be given more credit facilities so that they can get greater economic independence.

The 3rd L is leadership. It enables women to rise and fulfil their inborn abilities and talents. A lot can be done here. Sometimes women make better leaders than men. Women tend to make decisions based on consensus building, inclusion, compassion and sustainability. It is true that sometimes women lack the confidence to match their competence. They have to change their mindset. They should be ready to "dare the difference", to take risk and step outside their comfort zones. But they face a lot of barriers. These barriers are seen even when we talk about giving primary education for girls in a village or giving executive positions to women in business.

A1. Complete the details in column 'A' and 'B' about Women's Empowerment 'learning' and 'leadership' and rewrite: (2)

Learning	Leadership
i) First step of women's empowerment	i) Third step of Women's Empowerment
ii)	ii)
iii)	iii)

A 2. Find out from the extract the different ways to promote more opportunities for women in the workplace. (2)

A 3. "If you educate a boy, you train a man. If you educate a girl, you train a village" Explain your views on above statement in about fifty words. (2)

B: Summary (3)

21st century women's changed role..... true potential unutilized

..... need to give them rights importance of three L's

need to change mindset..... obstacles in their way.

C. Mind-mapping: (3)

You live in an era where huge information is communicated to you in different forms continuously. Develop a 'Mind Mapping' frame/design using your ideas/thoughts/concepts to illustrate / develop on the topic, 'Forms of Communication'.

SECTION: II
(Poetry and Appreciation)

(8)

Q.3. A Read the extract and complete the activities given below:

'Canst hear', said one, 'the breakers roar?
For methinks we should be near the shore'.
'Now where we are I cannot tell,
But I wish I could hear the Inchcape Bell'.
They hear no sound; the swell is strong;
Though the wind hath fallen they drift along,
Till the vessel strikes with a shivering shock, -
'O Christ! it is the Inchcape Rock!'
Sir Ralph the Rover tore his hair;
He curst himself in his despair;
The waves rush in every side,
The ship is sinking beneath the tide.
But even in his dying fear
One dreadful sound could the Rover hear,
A sound as if with the Inchcape Bell,
The Devil below was ringing his knell.

A1. Name the two speakers from the first stanza and write what they are saying. (2)

A2. Explain the line, 'The Devil below was ringing his knell' (2)

A3. "Evil cannot go unpunished in this world" write your opinion on this in about 50 words in the light of the poem 'Inchcape Rock' (2)

A4. Poetic device: (2)

Identify and explain the figure of speech in the following line.

A sound as if with the Inchcape Bell,
The Devil below was ringing his knell.

Q.3. B. Appreciation: (4)

Read the extract and write an appreciation of the poem.

Afoot and light-hearted I take to the open road,
Healthy, free, the world before me,
The long brown path before me leading wherever I choose.
Henceforth I ask not good-fortune, I myself am good-fortune,
Henceforth I whimper no more, postpone no more, need nothing,
Done with indoor complaints, libraries, querulous criticisms,
Strong and content I travel the open road.
The earth, that is sufficient,
I do not want the constellations any nearer,
I know they are very well where they are,
I know they suffice for those who belong to them.
(Still here I carry my old delicious burdens,
I carry them, men and women, I carry them with me wherever I go,
I swear it is impossible for me to get rid of them,
I am fill'd with them, and I will fill them in return.)

SECTION: III**(Writing Skills)****Q.4 Complete the activities as per the instruction given below:****(8)****A. Attempt any one from the given activities:****(4)****Drafting a Virtual Message:**

Imagine, you have planned different methods to study for your HSC Board Examination. Use the given templet and draft a Virtual Message in about 100/150 words, to give these details to your friend. give your own reasons to support your message.

With the help of the details given above complete the template given below.

Call For		
From:		
Date:	Time:	Phone:
		()
Taken By:		

OR**Review:**

Write a review on your 'favourite movie' that you have watched recently with the help of the following points.

- Title of the movie
- Story in short
- Characters and theme
- Reasons for appreciating the movie

B. Attempt any one from the given activities:**(4)****E-Mail:**

Your uncle has bought a 'Branded Wristwatch' through online shopping app. On receiving it you find it in a damaged condition. Your uncle has asked you to draft an E-Mail in a proper format to be sent to the concerned authority. Give the details of the product you received. Make a request to the concerned authority to take the damaged product back and send new one.

OR**Interview:**

Imagine you have to conduct an interview of a 'distinguished personality in the field of your own choice'.

prepare a set of 8 questions to be asked with the help of the given format and points.

Name of the interviewee (distinguished personality)	
Area of Success/Reputation	
Date/Venue/Time	
Duration of Interview	
Questions	
Questions based on -	
1. Early life/struggle	

2. Obstacles in Education	
3. Family Support	
4. Inspiration	
5. First Achievement	
6. Special Moment	
7. Future Plans	
8. Message	

SECTION: IV

(Genre- Novel)

Q.5. A. Complete the activities given below as per the instructions:

(4)

i) Match the columns:

(2)

A

B

1. Picaresque Novel

a) Presents the narrative through a series of correspondence or other documents. for e.g. letters, diaries entries

2. Epistolary Novel

b) includes terror, mystery, horror, thriller, supernatural, doom, death Or decay or haunted buildings.

3. Gothic Novel

c) narrates the adventures of the protagonist, who is an eccentric or a disreputable person, in an episodic form.

4. Bildungsroman Novel

d) is concerned with the growth of the protagonist's mind, spirit and character from their childhood or adulthood.

ii) Choose the correct alternative and rewrite the sentence.

(2)

a) The European novel is often said to begin with "Don Quixote" written by _____.

(Miguel de Cervantes/ John Bunyan/ Geoffrey Chaucer)

b) _____ has been described as the world's first novel.

(Tale of Genji/ The Canterbury Tales/ Evelina)

c) 'Rajmohan's Wife' was the first novel in English written by an Indian _____

(Raja Rao/ Bankim Chandra Chattopadhyaya)

d) _____ is the pioneer of the Stream of Consciousness technique in the English novel.

(Jane Austin/ Agatha Christie/ Virginia Wolf)

Q.5.B. Answer in about 50 words to the questions given below:

(4)

i) Give the character-sketch of the narrator in the extract from 'To Sir with Love'.

(2)

ii) Explain in brief 'the student teacher relationship' theme of the extract from 'To Sir with Love'

(2)



PRAHLADRAI DALMIA LIONS COLLEGE OF COMMERCE & ECONOMICS
Sunder Nagar, S.V. Road Malad (w), Mumbai 400064
ISO 9001:2015 Certified

Day-----02

SEAT NUMBER

--	--	--	--	--	--	--	--

2022	X	11	1300	(M)
MARATHI (02)				
TIME: 2.30 Hrs.		(4 Pages)		Max. Marks: 50

विभाग १ : गद्य (७ गुण)

कृती १ अ) खालील उताराच्या आधारे सूचनेनुसार कृती करा .

एखादी आनंददायक घटना घडते. तरीही आपल्याला म्हणावा तितका आनंद होत नाही, त्याची काही स्पष्ट कारणे असतात. एखाद्या नाट्यस्पर्धेत तुम्हांला सर्वोत्कृष्ट अभिनयाचं बक्षिस मिळतं; पण तुमच्या मते ते खरं तर दुसऱ्या एखाद्या कलाकाराला मिळायला हवं असेल, तर आनंद होऊनही रुखरुख लागून राहते. आनंद हा निखळ असेल, तरच तो आनंद असतो. 'खरा' असेल, तरच तो अनुभवता येतो. लोकांना पेढे 'वाटणं' वेगळं आणि स्वतःला आनंद वाटणं वेगळं. खरा आनंद ओळखण्याची एक सोपी खूण आहे. तुम्हांला हलकं हलकं, पिसासारखं वाटायला हवं. मनावरचे सर्व ताण, सर्व दडपणं नाहीशी व्हायला हवीत. मुख्य म्हणजे ईर्ष्या, असूया नाहीशी व्हायला हव्यात. राग, द्वेष विराघळायला हवेत. काहींना एखादं बक्षीस मिळालं, तरी त्या 'अमक्या' ला चार बक्षीस मिळाली याचं वैषम्य वाटतं किंवा मग 'त्या' लेकाला एकही बक्षीस मिळालं नाही', याचाच अधिक आनंद होतो. स्वतःला काही मिळणं, स्वतः आनंद मिळवणं वापेक्षा दुसऱ्याला आनंद न मिळणं हे ज्यांना महत्त्वाचं वाटतं, ते आयुष्यात कधीच आनंदी होऊ शकत नाहीत. तुलना आली, की आनंद संपलाच. खरा आनंद दुसऱ्याच्या दुःखावर कधीच पोसला जात नसतो. खरा आनंद हा मनाला केवळ हलकंच नव्हे, तर चित्ताला शुद्ध करत असतो. माणूस खऱ्या आनंदात असतो, तेव्हा त्याला सगळं जग छान, सुंदर वाटत असतं. आपल्यासारखंच सगळ्यांनी मजेत, आनंदात असावं, असंच त्याच्या मनात येत असतं.

१) लेखकाने वर्णिलेली खऱ्या आनंदाची लक्षणे १. _____ २. _____

(१)

२) स्वमत लिहा .

(२)

आनंद हा खरा असेल तरच तो अनुभवता येतो . याविषयी तुमचे मत सांगा.

ब) खालील उताराच्या आधारे सूचनेनुसार कृती करा.

२००६ चा लडाख हा एक नवंच रूप लेऊन समोर आला होता. आभाळच फाटलं होतं. कधीही पाऊस न पडणारा प्रदेश ओलाचिंब झाला होता. बऱ्याच ठिकाणी नद्यासदृश पाणी वाहत होते. तिथल्या लडाखी मुलांना हे सगळं अप्रूपच होतं. लेहला सुखरूप पोहोचलो; पण पुढील सगळे मार्ग बंदच होते. एकच मार्ग उघडा होता - कर्नल झा। त्यांना भेटल्याशिवाय जायचं नाही. 'दिमाग मॅ डाल दिया था ना।' बरोबर पाच वाजता दिमाखदार वळण घेत कर्नल झा यांची गाडी प्रवेश करती झाली. आम्ही आलो आहोत, हा निरोप पाठवल्यानंतर त्यांनी अतिशय प्रेमानं आमचं स्वागत केलं. आमची अडचण समजून त्यांनी कुठले मार्ग खुले आहेत वगैरे चौकशी केली. ०११सर्गापुढे आपलं काहीच चालत नाही. उदास होऊ नका. आपके हौसले बुलंद है। कार्यक्रमात बदल करून आता आधी कारगिलला जा. दोन दिवसांनी तुम्ही येईपर्यंत सगळे रस्ते मोकळे होतील.० असे ते म्हणाले. होटेलवर पोहोचल्यावर आमचे उजळलेले चेहरे पाहून सगळ्यांच्या मनातील मळमळ दूर झालं. कर्नल झा यांच्या सूचनेप्रमाणे आम्ही आधी कारगिल-द्रास या ठिकाणांकडे निघालो. कारगिल-द्रास येथील विजयस्तंभ, तोलोलिंग, श्री पिपल, बन्ना टॉप, टायगर हिल आता अगदी परिचयाचे वाटू लागले. तेथील सैनिकांना भेटून झाल्यानंतर जड अंतःकरणानं ' पुनरागमनायच ' म्हणत परतीच्या प्रवासाला निघालो. रात्रीचे दहा वाजले होते. आता तासाभरात लेहला पोहोचू. उद्या कुठे जायचं याची आखणी सुरू झाली. अचानक गाडीला आणि आमच्या विचारांना

करकचून ब्रेक लागला. थंडीमुळे चेहरे झाकलेले तीन जण टोंचच्या प्रकाशात, भयाण वातावरणाला अधिक गडद करून आम्हांला परत जायला सांगत होते. कारण पुढे खल्सेचा पूल कोसळला होता. बाहेर मिट्ट काळोख, अनोळखी रस्ता, सोयत दहा तरुण मुली! रस्ता बंद! माघारी जाणं अशक्य, पुढं जाणं दुरापास्त! एकच आधार - आर्मी पोस्ट!

१. कधीही पाऊस न पडणार्या लडाखचे नवे रूप १).....२)..... (१)
२. कारण लिहा. (१)
थंडीमुळे चेहरे झाकलेले तीन जण टोंचच्या प्रकाशात, भयाण वातावरणाला अधिक गडद करत आम्हांला परत जायला सांगत होते. कारण
३. स्वमत लिहा. (२)
सैत्तिकी जीवन आणि सामान्य नागरिकांचे जीवन यांची तुलना तुमच्या शब्दांत करा.

विभाग २: पद्य (गुण ७)

कृती २ अ) खालील कवितेच्या आधारे सूचनेनुसार कृती करा.

रंगुनी रंगात सार्या रंग माझा देणळा!
गुंतुनी गुंत्यात सार्या पाय माझा मोकळा!
कोण जाणे कोठुनी ह्या सावल्या आल्या पुढे;
मी असा की लागती ह्या सावल्यांच्याही झळा!
राहती माझ्यासवे हीं आसवे गीतांपरी;
हें कशाचें दुःख ज्याला लागला माझा लळा!
कोणत्या काळीं कळेना मी जगाया लागलों
अन् कुठे आयुध्य गेलें कापुनी माझा गळा!

१. एका शब्दात उत्तरे लिहा. (१)
 - i) कवीला यांच्याशी झळा लागतात.
 - ii) कवीला सदैव सोयत करणारी
२. खालील ओळींचा अर्थ लिहा. (२)

रंगुनी रंगात सार्या रंग माझा देणळा!
गुंतुनी गुंत्यात सार्या पाय माझा मोकळा!

आ) खालील ओळींचे रसग्रहण करा. (कोणतेही १) (४)

 १. उन्हातान्हात, रोज मरते
बाई मरते
हिरवी होऊन, मागं उरते
बाई उरते
खोल विहिरीचं, पाणी शेंदते
बाई शेंदते
रोज मातीत, मी ग नांदते
बाई नांदते
 २. आलेषांच्या तुपारस्नानी
भिऊन पिसोळी थव्याथव्यांनी
रत्नकळा उधळीत माघ्यान्ही
न्हाणोत इंद्रवर्णात बना

विभाग ३ : साहित्यप्रकार (गुण ६)

कृती ३.

खालील कृती सोडवा.

१. कथेचे घटक - १. _____ २. _____ ३. _____ ४. _____ (२)
२. १) अनूने घर सोडले कारण (१)
३. २) भिडे दाम्पत्य आणि टॅक्सी ड्रायव्हर यांच्यातील नातेसंबंध .. (१)
४. स्वमत लिहा. (२)

कथेच्या ' शोध ' या शीर्षकाची समर्पकता तुमच्या शब्दांत पटवून या.

विभाग ४: उपयोजित मराठी (१०)

कृती ४. पुढील कृती सोडवा. (कोणत्याही २)

(१०)

१. मुलाखतीचे प्रमुख हेतू तुमच्या शब्दांत स्पष्ट करा.
२. एका वस्त्रदालनाचे आकर्षक माहितीपत्रक तयार करा.
३. परिचारिकेची मुलाखत घेण्यासाठी प्रश्नावली तयार करा.

विभाग ५: व्याकरण व लेखन (२०)

कृती ५. अ) सूचनेनुसार कृती करा.

(१०)

१) (य)योग्य पर्याय निवडा.

(१)

हा आनंद सर्वत्र असतो.

वरील विधानाचे प्रश्नार्थी वाक्य ओळखून लिहा.

- १) हा आनंद कुठे नसतो ?
- २) हा आनंद कुठे असतो ?
- ३) हा आनंद सर्वत्र नसतो का ?
- ४) हा आनंद सर्वत्र असतो का ?

(र) सूचनेप्रमाणे सोडवा.

(१)

सकाळी फिरणे आरोग्यास हितकारक आहे.

(नकारार्थी वाक्य करा.)

२) योग्य पर्याय निवडा.

य) ' मीनाक्षी ' या सामासिक शब्दातील समास ओळखून लिहा.

(१)

- १) अव्ययीभाव समास
- २) तत्पुरुष समास
- ३) द्वंद्व समास
- ४) बहुव्रीहि समास

र) ' खरेछोटे ' या सामासिक शब्दातील समासाचे नाव लिहा.

(१)

३) योग्य पर्याय निवडा.

य) ' मुले प्रदर्शनातील चित्रे पाहतात. '

(१)

वरील वाक्यातील प्रयोग ओळखा.

- १) कर्तरी प्रयोग
- २) कर्मणी प्रयोग
- ३) भावे प्रयोग
- ४) यांपैकी नाही

र) कर्मणी प्रयोगाचे वाक्य ओळखून लिहा.

(१)

१) सुजाण नागरिक परिसर स्वच्छ ठेवतात.

२) शिक्षकाने विद्यार्थ्यास शिकविले .

३) भारतीय संघाने विश्वचषक स्पर्धा जिंकली.

४) मावळ्यांनी शत्रूस युद्धभूमीवर घेरले.

- ४) योग्य पर्याय निवडा. (१)
- १) वाक्याच्या आशयावरून वाक्यप्रकार ओळखा.
वेग हे गतीचे रूप आहे. (१)
- २) क्रियापदाच्या रूपावरून वाक्यप्रकार ओळखा.
वाहनांच्या वेगाची चिंता वाटते. (१)
- ५) य) 'अगतिक होणे' या वाक्यप्रचाराचा अर्थ खालील पर्यायांतून ओळखून लिहा. (१)
- १) निरुपाय होणे
२) निरुत्साही होणे
३) पराभूत होणे
४) गळून जाणे (१)
- २) 'अगतिक होणे' या वाक्यप्रचाराचा वाक्यात उपयोग करा. (१०)
- आ) खालीलपैकी कोणत्याही एका विषयावर सुमारे २०० ते २५० शब्दांत निबंध लिहा.
- १) माणुसकीचा झरा : बाबा आमटे
२) भ्रमणध्वनी (मोबाइल) बंद झाले तर ..
३) कोरोनाचे आत्मवृत्त
४) समाज घडवण्यात युवकांची जबाबदारी

**PRAHLADRAI DALMIA LIONS COLLEGE OF COMMERCE & ECONOMICS**

Sunder Nagar, S.V. Road Malad (w), Mumbai 400064

ISO 9001:2015 Certified

Day-----02 SEAT NUMBER

--	--	--	--	--	--	--

2022	X	11	1300	(H)
HINDI (04)				
TIME: 2.30 Hrs.		(05 Pages)		Max. Marks: 50

- सूचनाएँ:
१. सूचना के अनुसार गद्य, पद्य की सभी कृतियों में आवश्यकता के अनुसार आकृतियों में ही उत्तर लिखना अपेक्षित है।
 २. सभी आकृतियों के लिए पेन का ही प्रयोग करें।
 ३. आकृतियों में उत्तर पेन से ही लिखना आवश्यक है।
 ४. व्याकरण विभाग में पूछी गई कृतियों के उत्तर के लिए आकृतियों की आवश्यकता नहीं है।

विभाग - १ : गद्य - अंक : १४

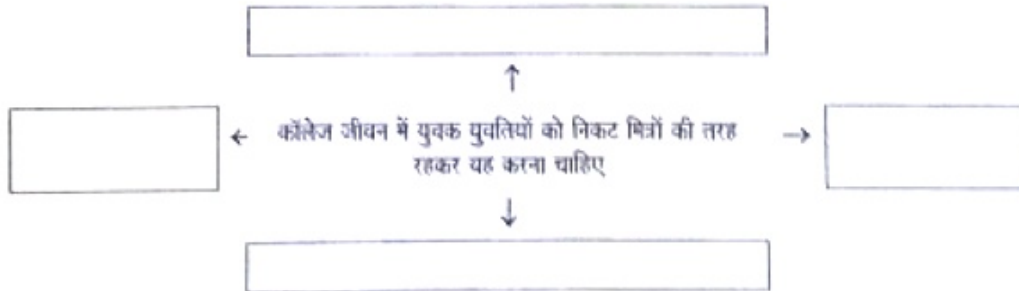
कृति १ (अ) गद्यांश पढ़कर दी गई सूचनाओं के अनुसार कृतियाँ पूर्ण कीजिए

(५)

तुम अपनी सहेली रचना को यह समझाओ की कठिनी की बड़ी-बड़ी बातें करना आसान है, कोई छोटी-सी कठिनी भी कर दिखाना कठिन है और एक ही झटके में यूँ टूट-हारकर बैठ जाना तो निहायत मूर्खता है। फिर अभी तो वह प्रथम वर्ष के पूर्वार्ध में ही है। अभी से उसे ऐसा कोई कदम नहीं उठाना चाहिए। जरूरी हो तो सोच-समझकर वे अपनी दोस्ती को आगे बढ़ा सकते हैं।

कॉलेज जीवन की पूरी अवधि में वे निकट मित्रों की तरह रहकर एक-दुसरे को देखें-जानें, जाँचे-परखें। एक-दुसरे की राह का रोड़ा नहीं, प्रेरणा और ताकत बनकर परस्पर विकास में सहभागी बनें। फिर अपनी पढ़ाई की समाप्ति पर भी यदि वे एक-दुसरे के साथ पूर्ववत् लगाव महसूस करें, उन्हें लगे कि निकट रहकर सामने आई कठिनाई-गलतियों ने भी उनकी दोस्ती में कोई दरार नहीं डाली है, तो वे एक-दुसरे को उनकी समस्त खूबियों-कर्मियों के साथ स्वीकार कर अपना लें। उस स्थिति में की गई यह कठिनी कठिनी न कठिन होगी, न असफल।

१. संजाल पूर्ण कीजिए



२. निम्नलिखित शब्दों के लिंग पहचानकर लिखिए

२

- | | |
|--------------------|------------------|
| १) कठिनी - | २) विकास - |
| ३) प्रेरणा - | ४) कदम - |

३. 'विद्यार्थी जीवन में मित्रता का महत्व' विषय पर ४० से ५० शब्दों में अपना मत व्यक्त कीजिए। २

आ) गद्यांश पढ़कर दी गई सूचनाओं के अनुसार कृतियाँ पूर्ण कीजिए

(४)

ऐसा जान पड़ता था कि आज नगर से बाहर वन में नया बस जाने को है- वहाँ, जहाँ कनाते लगी थी, जहाँ कुत्तियों की कतारें सजी थी। इधर जनता बढ़ रही थी और उद्विग्नता और अधीरता से गानयुद्ध के समय की प्रतीक्षा कर रही थी। बालक को प्रतापकल मिठाई मिलने की आशा दिखाई जाए तो वह रात को कई बार उठ-उठकर देखता है कि अभी सूरज निकला है या नहीं? उसके लिए समय रुक जाता है। उसके हाथ से धीरे-धीरे छूट जाता है। वह व्याकुल हो जाता है।

समय हो गया। लोगों ने आँख उठाकर देखा। अकबर सिंहासन पर था, साथ ही नीचे की तरफ लानसेन बैठा था और सामने फर्श पर नवयुवक बैजू बावरा दिखाई देता था। उसके मुँह पर तेज था, उसकी आँखों में निर्भयता थी।

अकबर ने घंटी बजाई और तानसेन ने कुछ सवाल संगीतविद्या के संबंध में बैजू बावरा से पूछे। बैजू ने उचित उत्तर दिए और हर्ष से तालियाँ पीट दीं। हर भूँह से 'जय हो, जय हो' "बलिहारी, बलिहारी" की ध्वनि निकलने लगी।

इसके बाद बैजू बावरा ने सितार हाथ में ली और जब इसके पर्दों को हिलाया तो जनता बहमानंद में लीन हो गई। पेड़ों के निःशब्द हो गए। वायु रुक गई। सुनने वाले मंत्रमुग्धवत सन्निहीन हुए सिर हिलाने लगे। बैजू बावरे की अँगुलियाँ सितार पर दौड़ रही थीं तारों पर रागविद्या निछावर हो रही थी और लोगों के मन उछल रहे थे, झूम रहे थे, धिक्क रहे थे। ऐसा लगता था कि सारे विश्व की धड़क आ गई है।

१. उत्तर लिखिए

बैजू बावरा की अँगुलियाँ सितार पर दौड़ी, तब -

१.
२.
३.
४.

२. निम्नलिखित शब्दों के वचन बदलकर लिखिए

१. ध्वनि - २. चौदनियाँ -
३. पेड़ों - ४. कतारें -

इ) निम्नलिखित में से किसी एक प्रश्न का उत्तर ८० से १०० शब्दों में लिखिए।

१. 'बैजू बावर संगीत का सच्चा पुजारी है', इस विचार को स्पष्ट कीजिए।
२. 'पाप के चार हथियार' पाठ का संदेश लिखिए।

ई) साहित्य संबंधी सामान्य ज्ञान पर आधारित प्रश्नों के उत्तर एक-एक वाक्य में लिखिए। (सिर्फ १)

१. सुदर्शन जी का मूल नाम क्या है ?
२. लेखक कन्हैयालाल मिश्र 'प्रभाकर' जी के भाषाशैली -

विभाग - २ : पद्य - अंक : १४

कृति: २ (अ) निम्नलिखित पद्यांश पढ़कर दी गई सूचनाओं के अनुसार कृतियाँ पूर्ण कीजिए

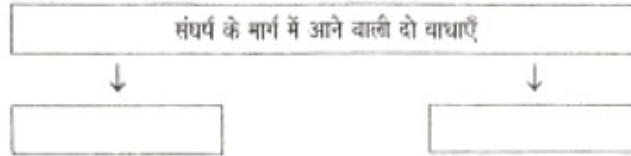
तुमने विश्वास दिया है मुझको,
मन का उच्छ्वास दिया है मुझको।
मैं इसे भूमि पर सँभालूँगा,
तुमने आकाश दिया है मुझको।

सूत्र यह तोड़ नहीं सकते हैं,
तोड़कर जोड़ नहीं सकते हैं।
व्योम में जाएँ, कहीं भी उड़ जाएँ,
भूमि को छोड़ नहीं सकते हैं।

सत्य है, राह में अँधेरा है,
रोक देने के लिए घेरा है।
काम भी और तुम करोगे क्या,
बढ़ चलो, सामने अँधेरा है।

१. (i) कृति पूर्ण कीजिए

सूत्र यह नहीं कर सकते हैं



- २) निम्नलिखित शब्दों के लिए पद्यांश में से विलोम शब्द ढूँढकर लिखिए २
- १) उजाला x २) अविश्वास x
 ३) पीछे x ४) असत्य x

- ३) 'घरती से जुड़ा रहकर ही मनुष्य अपने लक्ष्य को प्राप्त कर सकता है' इस विषय पर ४० से ५० शब्दों में अपना मत प्रकट कीजिए । २

- आ) निम्नलिखित पद्यांश पढ़कर दी गई सूचनाओं के अनुसार कृतियाँ पूर्ण कीजिए (४)

कलु कहि नीच न छोड़िए, भलो न बाको संग । आप अकारज आपनो, करत कुबुध के साथ ।
 पाथर डारै कीच में, उधरि विगारै अंग ॥ पाप कुल्हाडी आपने, मारत मूरख हाथ ॥
 जो पावै अति उच्च पद, ताको पतन निदान । कुल कपूर जान्यो परै, सखि सुभ लच्छन गान ।
 ज्यों तपि-तपि मध्याह्न लौं, अस्त होतु है भान ॥ होनहार बिरवान के, होत चीकने पात ॥
 जो जाको गुन जानही, से तिहि आदर देत ।
 कोकिल अंबहि लेत है, काग निबोरी लेत ॥

-(‘चंद्र सतसई’ संग्रह से)

- १) उत्तर लिखिए २

- १) कीचड़ में पत्थर फेंकने पर यह होता है -
 २) निबोरीयों का आदर करने वाला -
 ३) अपने पाँव पर अपने हाथ से कुल्हाड़ी मारने वाला -
 ४) चीकने पात इनके होते हैं -

२. 'ज्ञान की पूँजी बढ़ानी चाहिए', इस विषय पर ४० से ५० शब्दों में अपने विचार लिखिए २

- इ) निम्नलिखित मुद्दों के आधार पर 'पेड़ छेने का अर्थ' कविता का रसास्वादन कीजिए । (३)

- १) रचनाकार का नाम:-
 २) प्रतीक विधान:-
 ३) कविता पसंद आने का कारण:-

- ई) साहित्य संबंधी सामान्य ज्ञान पर आधारित प्रश्नों के उत्तर एक एक वाक्य में लिखिए (सिर्फ १) (१)

- १) गुरु नानक जी की रचनाओं के नाम:-
 २) नयी कविता का परिचय -

विभाग - ३ : विशेष अध्ययन - अंक : ०६

- कृति ३ (अ) काव्य पंक्तियाँ पढ़कर दी गई सूचनाओं के अनुसार कृतियाँ पूर्ण कीजिए । (६)

आज इस गाँव से
 दवारिका की युद्धोन्मत्त सेनाएँ गुजर रही हैं
 मान लिया कि कुल तेरा
 सर्वाधिक अपना है
 मान लिया कि तू
 उसके रोम-रोम से परिचित है
 मान लिया कि ये अगणित सैनिक
 एक-एक उसके हैं :
 पर जान रख कि ये तुझे बिलकुल नहीं जानते
 पथ से हट जा बावरी

यह आम्रवृक्ष की डाल
उनकी विशेष प्रिय थी
तेरे न आने पर
सारी शाम इसपर टिक
उन्होंने बंशी में बार-बार
तेरा नाम भरकर तुझे टेरा था -
आज यह आम की डाल
सदा-सदा के लिए काट दी जाएगी |

१. उत्तर लिखिए: २
- १) कनु सबसे ज्यादा इसका है -
 - २) राधा इसके रोम रोम से परिचित है -
 - ३) अगणित सैनिक इसके है -
 - ४) राधा को ये बिलकुल नहीं पहचानते -
- २) पद्यांश में से प्रयुक्त शब्द ढूँढकर लिखिए: २
- १) २)
 - ३) ४)
- ३) 'धार्मिक दृष्टि से पवित्र माने जाने वाले' वृक्ष विषय पर ४० से ५० शब्दों में अपने विचार लिखिए | २

विभाग - ४ : व्यावहारिक हिंदी पारिभाषिक शब्दावली - अंक १२

कृति: ४(अ) निम्नलिखित का उत्तर लगभग १०० से १२० शब्दों में लिखिए (६)

'लालच का फल बुरा होता है', इस उक्ति का विचार फलन कीजिए)

अथवा

परिच्छेद पढ़कर दी गई सूचनाओं के अनुसार कृतियाँ पूर्ण कीजिए |

"स्नेहा बहुत-बहुत बढ़ाई ! आज तुमने फीचर लेखन में शीर्ष स्थान पा लिया है ।" स्नेहा की बात काटकर संपादक ने बढ़ाई दी । एक स्वर में कहा "बढ़ाई हो ।" इन शब्दों को सुनते ही स्नेहा दस वर्ष पूर्व की दुनिया में चली गई । पत्रकारिता कोर्स के बीते दिन-महीने ... लेखन के संबंध में सुने हुए लेक्चर्स ... प्रोफेसरों से की गई चर्चाएँ ... अध्ययन, परीक्षा ... फीचर लेखन का प्रारंभ ... फीचर लेखन की सिद्ध लेखिका बनना ही उसका एकमात्र सपना था ।

उसकी यादों में वह दिन तैर गया ... जब उसे पत्रकारिता कोर्स में फीचर लेखन पर व्याख्यान देने के लिए बुलाया गया था । हॉल विद्यार्थियों से खचाखच भरा हुआ था । आज उसे अपने परिश्रम सार्थक होते नजर आ रहे थे । फीचर लेखन पर स्नेहा ने बोलना प्रारंभ किया । प्रसंगों के साथ स्नेहा विद्यार्थियों को फीचर लेखन की विशेषताएँ बताने लगी, "अच्छा फीचर नवीनतम जानकारी से परिपूर्ण होता है । किसी की सत्यता अथवा तथ्यता फीचर का मुख्य तत्व है । फीचर लेखन में राष्ट्रीय स्तर के तथा अन्य महत्वपूर्ण विषयों का समावेश होना चाहिए व समाचारपत्र दूर-दूर तक जाते हैं । इतना ही नहीं; फीचर का विषय समसामयिक होना चाहिए ।

- १) उत्तर लिखिए: २
- *फीचर लेखन की विशेषताएँ
- १)
 - २)
 - ३)
 - ४)
- २) निम्नलिखित शब्दों के लिए समानार्थी शब्द लिखिए
- १) समाचारपत्र - २) रोचक -
 - ३) परिश्रम - ४) सिद्धहस्त -
- ३) 'सफलता मिलने पर मिलने वाली वधाइयों का प्रभाव' विषय पर ४० से ५० शब्दों में अपने विचार लिखिए | २
- आ) निम्नलिखित में से किसी एक का उत्तर ८० से १०० शब्दों में लिखिए | ४
- १) फलन की प्रक्रिया पर प्रकाश डालिए |
 - २) फीचर लेखन के सोपानों को स्पष्ट कीजिए |

आ)

सही विकल्प चुनकर वाक्य फिर से लिखिए:

१) कई लोग और पल्लवन को एक मानने की गलती हैं |

(कहानी / निबंध)

२) फीचर लेखन होना चाहिए |

(भावनाप्रधान / कल्पनाप्रधान)

३) शारीरिक विकास के साथ-साथ विकास भी आवश्यक होता है)

(शैक्षिक / बौद्धिक)

४) फीचर लिखने से पहले फीचर का एक योजनाबद्ध बनाना चाहिए)

(ढाँचा / सौचा)

इ) निम्नलिखित शब्दों में से किन्हीं दो के हिंदी पारिभाषिक शब्द लिखिए |

२

विभाग - ५ : व्याकरण - अंक : ०४

कृति: ५(अ) निम्नलिखित वाक्यों का कोष्ठक में दी गई सूचना के अनुसार काल परिवर्तन कीजिए | (सिर्फ १)

१

१) इस वेग में वह पिस जाएगा | (सामान्य वर्तमानकाल)

२) जो जवान थे उनके बाल सफेद हो गए | (पूर्ण भूतकाल)

आ) निम्न पंक्तियों में उद्धृत अलंकार पहचानकर उनके नाम लिखिए | (सिर्फ १)

१

१) जियु बिनु देह नदी बिनु बारी |

तैसे हि अनाथ पुरुष बिनु नारी ||

२) हनुमंत की पूँछ में लग न पाई आग |

लंका सगरी जल गई गए निशाचर भाग ||

इ) निम्न पंक्तियों में उद्धृत रस पहचानकर उसका नाम लिखिए | (सिर्फ १)

१

१) राम के रूप निहारति जानकी, कंकन के नग की परछाही,

यातै सबै सुधि भूलि गई, कर टेकि रही पल टारत नाही |

२) माटी कहै कुम्हार से, तू क्या रौंदे मोहे |

एक दिन ऐसा आएगा, मैं रौंदूंगी तोहे ||

ई) निम्नलिखित मुहावरों के अर्थ लिखकर उचित वाक्यों में प्रयोग कीजिए | (सिर्फ १)

१

१) लहर को ऊपर से उतार देना २) राह का रोड़ा बनना



PRAHLADRAI DALMIA LIONS COLLEGE OF COMMERCE & ECONOMICS

Sunder Nagar, S.V. Road Malad (w), Mumbai 400064

ISO 9001:2015 Certified

Day-----06

SEAT NUMBER

--	--	--	--	--	--	--	--	--	--

2022

X

17

1300

(E)

ECONOMICS (49)

TIME: 2.30 Hrs.

(2 Pages)

Max. Marks: 50

NOTE:

- 1) All the questions are compulsory.
- 2) Draw neat tables and diagrams wherever necessary.
- 3) Figures to the right indicate full marks
- 4) Write answers to all main questions on new page.

Q.1 (A) Choose the correct option.

(05)

(I) The branch of economics that deals with the allocation of resources.

- a) Micro Economics. b) Macro Economics
c) Econometrics. d) Monetary Economics

Options:

- 1) a, b, c 2) a and b
3) Only a. 4) None of these

(II) After a point of satiety, any additional consumption of commodity result into;

- a) Negative MU. b) Diminishing TU
c) Disutility. d) Maximum TU

Options:

- 1) a, b, d 2) a, b, c
3) a, c, d. 4) None of these

(III) Indirect demand :

- a) Machinery b) Sugar
c) Labour. d) Capital

Options:

- 1) a, b, c and d. 2) a, b, c
3) a, b, d. 4) a, c, d

(IV) In case of inferior goods the income elasticity of demand is :

- a) Positive. b) Negative
c) Infinite. d) Zero

Options:

- 1) a, c 2) b, c
3) a, b, c 4) only b

(V) Increase in supply is shown by:

- a) Price change only
b) Movement on the same supply curve.
c) Shifting of the supply curve to the left.
d) Shifting of the supply curve to the right.

Options:

- 1) a, b 2) b, c
3) Only d 4) b, c, d

(B) Complete the correlation.

(05)

(I) Macro Economics theory: Income and Employment:: Micro Economics: _____

(II) Transport of goods: _____::Storage of goods: Time Utility

(III) Direct Demand : Food and Mobile :: _____ : Land and Labour

(IV) Rectangular hyperbola : _____:: Steeper demand curve: Relatively inelastic demand

(V) Total cost : TFC+ TVC :: Average cost : _____

Q2(A) Identify and explain the following concept (Any Two)

- (I) Manju collected the information about the income of particular firm .
(II) Out of 5000kgs of rice the farmer offered to sale 2000 kgs of rice in the market at 40 rupees per kg
(III) Whenever there is a fall in price of gold, demand for gold rises.

(B) Distinguish between (Any Two).

- (I) Individual Demand and Market Demand
(II) Stock and Supply
(III) Micro Economics and Macro Economics

Q.3) Answer the following (Any Two)

- 1) Explain any four features of micro economics.
2) Elaborate any four features of utility.
3) Explain any four determinants of supply.

Q.4) State with reasons whether you agree or disagree with the following statements. (AnyTwo).

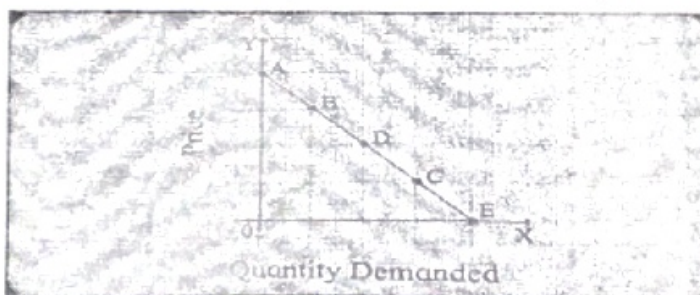
- (I) The scope of micro economics is unlimited.
(II) There are no exceptions to law of Diminishing marginal utility.
(III) Supply curve of labour is backward bending.

Q.5) Study the following table ,figure , passage and answer the questions given below it. (Any Two)

- 1) Observe the market supply schedule of onions and answer the following questions.

Price in rupees	Supply of firm A	Supply of firm B	Supply of firm C	Market supply
10	-----	20	45	100
20	40	-----	55	140
30	50	55	65	-----
40	65	65	-----	200

- 2) In the following diagram AE is the linear demand curve of a commodity. On the basis of the given diagram state whether the following statements are true or false .give reasons to your answer .



- (I) Demand at point C is relatively elastic demand.
(II) Demand at point D is relatively inelastic demand.
(III) Demand at point B is unitary elastic demand.
(IV) Demand at point E is perfectly inelastic demand.

3) Read the following passage and answer the questions given below it.

Prime Minister Narendra Modi rooted for energy independence and said India has to become self-sufficient meeting its energy needs in his address to the nation on the 75th Independence Day. He further said that initiatives like solar energy, Mission Hydrogen and adoption of electric vehicles (EVs) need to be taken to "the next level of energy independence."

For India to progress, for "Atmanirbhar Bharat", energy independence is necessary," he said. "India has to pledge that it will be energy independent by the year we celebrate 100th year of Independence."

The roadmap for that is to increase usage of natural gas in the economy, setting up a network for supply of CNG and piped natural gas across the country, blending 20 per cent ethanol in petrol and electric mobility, he said. The country has achieved the target of 100 gigawatts of renewable energy capacity ahead of the target.

Q.1) What is necessary for self-reliant India?

Q.2) When will India become independent in the field of energy?

Q.3) Give your opinion on the above passage

Q.6) Answer the following questions in detail (Any One).

- I) Explain the law of demand with its exceptions.
II) What is price elasticity of demand? Explain the types of price elasticity of demand.



PRAHLADRAI DALMIA LIONS COLLEGE OF COMMERCE & ECONOMICS
Sunder Nagar, S.V. Road Malad (w), Mumbai 400064
ISO 9001:2015 Certified

Day-----05 SEAT NUMBER

--	--	--	--	--	--	--	--

2022	X	14	1300	(E)
ORGANISATION OF COMMERCE & MANAGEMENT (S1)				
TIME: 2.30 Hrs.		(1 Page)		Max. Marks: 50

Q.1 (A) Answer in one sentence:

1. What is standardization of tools and equipments?
2. What is Controlling?
3. What is Management?
4. What is RTGS?
5. What is B2B?

[5 marks]

(B) Give one word / terms / phrase for the following sentences:

1. The principle of management that aims of fair treatment to employees.
2. A function directly related with human beings.
3. The statement of contract between the insured and insurer.
4. This mode of transport is relatively expensive.
5. The first step in online transaction.

[5 marks]

(C) Select correct option from the bracket:

Group A	Group B
1. E-commerce	
2.	Specialized Postal
3. Planning	
4.	Digital Cash

[4marks]

(Logistics Post, Basic Function, Branch of e-business, cyber space)

Q.2 Explain the following terms/concepts: [Any 2]

1. Co-ordination
2. Motion Study
3. Service
4. KPO

[4 marks]

Q.3 Distinguish between [Any 2]

1. Planning and Organizing
2. Life Insurance and Marine Insurance
5. BPO and LPO

[8marks]

Q.4 Answer in Brief [Any 2]

1. Explain types of warehouses.
2. Importance of Directing.
3. Elaborate Principles of Scientific Management.

[8marks]

Q.5 Justify the following statement: [Any 2]

1. Communication is essential for growth of business.
2. Principles of management are applicable to all types of organizations.
3. Right person at right job with right pay is the basic principle of staffing.

[8 marks]

Q.6 Answer the following. (Any 1)

1. Explain the functions of Commercial Bank.

(Marks 8)

Or

2. Explain Henry Fayol's Administrative theory of management.



PRAHLADRAI DALMIA LIONS COLLEGE OF COMMERCE & ECONOMICS

Sunder Nagar, S.V. Road Malad (w), Mumbai 400064

ISO 9001:2015 Certified

Day-----04

SEAT NUMBER

--	--	--	--	--	--	--

2022	X	13	1300	(E)
MATHEMATICS & STATISTICS (88)				
(COMMERCE)				
TIME: 2.30 Hrs.		(5 Pages)		Max. Marks: 50

Instructions

- 1) All questions are compulsory.
- 2) There are **FOUR** questions.
- 3) Use of logarithmic tables is allowed. Use of calculator is **not** allowed.
- 4) For each MCQ, correct answer must be written along with its alphabet.

e. g. a)/ (b)...../ (c)/(d)

Q 1. A) Select and write the most appropriate answer from the given alternatives for each sub question. (1 mark each)

i) If p : '1' is a real number

q : '2' is an even prime number

Then, symbolic form of statement

"It is not true that '1' is a real number and '2' is an even prime number" is

- (a) $\sim p \vee \sim q$ (b) $\sim (p \wedge q)$ (c) $\sim (p \vee q)$ (d) $p \wedge \sim q$

ii) The matrix $\begin{bmatrix} 8 & 0 & 0 \\ 0 & 8 & 0 \\ 0 & 0 & 8 \end{bmatrix}$ is _____

(a) Identity matrix

(b) scalar matrix

(c) Null matrix

(d) Column matrix

iii) A Merchant gives his agent 3% ordinary commission plus 2% del credere commission on sale of goods worth Rs.60,000. How much does merchant receive?

- (a) Rs.55,000 (b) Rs.65,000 (c) Rs.57,000 (d) Rs.63,000

iv) The premium and property worth Rs. 12,50,000 at 3% if the property is insured to the extent of 80% of its value is_

- a) Rs300 b) Rs 3,000 c) Rs 30,000 d) Rs 3,00,000

v) The Cost of Living Index Number using Aggregate Expenditure Method is given by

a) $\frac{\sum P_1 Q_0}{\sum P_0 Q_0} \times 100$

b) $\frac{\sum P_1 Q_1}{\sum P_0 Q_1} \times 100$

c) $\frac{\sum P_1 Q_1}{\sum P_0 Q_0} \times 100$

d) $\frac{\sum P_0 Q_1}{\sum P_0 Q_0} \times 100$

(1 mark each)

B) State whether the following statements are true or false.

- If p and q are true and r and s are false then the truth value of compound statements $\sim[(\sim p \vee s) \wedge (\sim q \wedge r)]$ is T.
- For matrices A and B, matrix multiplication is not commutative, that is, in general $AB \neq BA$.
- The Hungarian Method is an optimization algorithm that solves a Sequencing Problem.
- Secular trend of a time series is its smooth and regular long-term movement.

(1 mark each)

C) Fill in the following blanks with appropriate words.

- The difference between face value and present worth is called _____
- Amount which is insured under the policy is called _____
- If job A to D have processing times as 5, 6, 8, 4 on first machine and 4, 7, 9, 10 on second machine then the optimal sequence is _____
- If $P_{01}(L) = 225$, $P_{01}(P) = 144$ then calculate $P_{01}(F) =$ _____

(3 marks each)

Q 2. Attempt any SEVEN of the following.

- If $\sum p_0 q_0 = 140$, $\sum p_0 q_1 = 200$, $\sum p_1 q_0 = 350$, $\sum p_1 q_1 = 460$, find Laspeyre's, Paasche's, and Dorbish-Bowley's Price Index Numbers.
- Using the truth table, examine whether the following statement patterns are tautologies, contradictions or contingency.
 $(p \wedge q) \rightarrow p$
- If $A = \begin{bmatrix} 2 & -2 \\ 4 & 3 \end{bmatrix}$ then find A^{-1} by the adjoint method.
- Use 1995 as base year in the following problem find the Price Index Number using Simple Aggregate Method

Commodity	A	B	C	D	E
Price (in Rs.) in 1995	42	30	54	70	120
Price (in Rs.) in 2005	60	55	74	110	140

- A bill of Rs.6,395 drawn on 19th January 2015 for 8 months was discounted on February 2015 at 8% p.a. interest. What is the banker's discount? What is the cash value of the bill?
- The following data gives the production of bleaching powder (in '000 tonnes) for the 1962 to 1972.

Year	1962	1963	1964	1965	1966	
Production	0	0	1	1	4	
Year	1967	1968	1969	1970	1971	1972
Production	2	4	9	7	10	8

- a) Obtain trend values using 5-yearly moving averages.
 b) Plot the original time series and trend values obtained in (i) on the same graph.
- vii) A lady plans to save for her daughter's marriage. She wishes to accumulate a sum of Rs.4,64,100 at the end of 4 years. What amount should she invest every year if she gets an interest of 10% p.a. compounded annually? [Given $(1.1)^4 = 1.4641$]
- viii) Find the sequence that minimizes the total elapsed time to complete the following jobs in the order AB. Find the total elapsed time and idle times for both the machines.

Job	I	II	III	IV	V	VI	VII
Machine A	7	16	19	10	14	15	5
Machine B	12	14	14	10	16	5	7

- ix) A job production unit has four jobs A, B, C, D which can be manufactured on each of the four machines P, Q, R and S. The processing cost of each job for each machine is given in the following table:

Job	Machines (Processing Cost in Rs.)			
	I	II	III	IV
P	31	25	33	29
Q	25	24	23	21
R	19	21	23	24
S	38	36	34	40

Find the optimal assignment to minimize the total processing cost

- x) Four new machines M_1, M_2, M_3 and M_4 are to be installed in a machine shop. There are five vacant places A, B, C, D and E available. Because of limited space, machine M_2 cannot be placed at C and M_3 cannot be placed at A. The cost matrix is given below.

Machines	Places				
	A	B	C	D	E
M_1	4	6	10	5	6
M_2	7	4	-	5	4
M_3	-	6	9	6	2
M_4	9	3	7	2	3

Find the optimal assignment schedule

(4 marks each)

Q 3. Attempt any **THREE** of the following.

- i) Express the truth of each of the following statement by Venn diagram.
- Some rectangles are squares.
 - No co-operative industry is a proprietary firm.
 - Many servants are not graduates.
 - All natural numbers are real numbers and x is not a natural number.

ii) Find x and y , if $\begin{bmatrix} 2 & 0 & 3 \end{bmatrix} \left\{ 3 \begin{bmatrix} 6 & 3 \\ -1 & 2 \\ 5 & 4 \end{bmatrix} + 2 \begin{bmatrix} -4 & -1 \\ 1 & 0 \\ -3 & -4 \end{bmatrix} \right\} = \begin{bmatrix} x & y \end{bmatrix}$

iii) The following table gives the production of steel (in millions of tonnes) for years 1976

Year	1976	1977	1978	1979	1980	1981
Production	0	4	4	2	6	8
Year	1982	1983	1984	1985	1986	
Production	5	9	4	10	10	

Fit a trend line to the above data by the method of least squares

iv) A person takes a life policy for Rs.2,00,000 for a period of 20 years. He pays premium for 10 years during which bonus was declared at an average rate of Rs.20 per year per thousand. Find the paid up value of the policy if he discontinues paying premium after 10 years.

v) Find the sequence that minimizes the total times required in performing following jobs on three machines in the order ABC. Processing times (in hrs.) are given in the following table.

Job	1	2	3	4	5
Machine A	8	10	6	7	11
Machine B	5	6	2	3	4
Machine C	4	9	8	6	5

vi) A company has a team of four salesmen and there are four districts where the company wants to start its business. After taking into account the capabilities of salesmen and the nature of districts, the company estimates that the profit per day in rupees for each salesman in each district is as below :

Salesman	District			
	1	2	3	4
A	16	10	12	11
B	12	13	15	15
C	15	15	11	14
D	13	14	14	15

Find the assignment of salesman to various districts which will yield maximum profit.

Q 4. Attempt any **one** of the following.

(4 marks each)

i) A bill of Rs.8,000 drawn on 5th January 1998 for 8 months was discounted for Rs.7,680 on a certain date. Find the date on which it was discounted at 10% p.a.

Solution : Banker's Discount

$$B.D. = F.V. - C.V. = 8,000 - 7,680 = \text{Rs.}320$$

Date of drawing = 5th January 1998

Period = 8 months

Nominal due date =

Legal due date =

B.D. = Interest on F.V. for n at 10% p.a.

$$\therefore B.D. = \frac{F.V. \times \frac{n}{365} \times r}{100}$$

$$\therefore 320 = \frac{8,000 \times \frac{n}{365} \times 10}{100}$$

$$\therefore n = \boxed{} \text{ days}$$

April	May	June	July	Aug	Sep	Total
15	31	30	31	31	<input type="text"/>	<input type="text"/>

\therefore Date of discounting is

ii) Find x in the following table if Laspeyre's and Paasche's Price Index Numbers are equal.

Commodity	Base Year		Current Year	
	Price	Quantity	Price	Quantity
A	2	10	2	5
B	2	5	x	2

Solution

Commodity	Base Year		Current Year		$p_0 q_0$	$p_1 q_0$	$p_1 q_1$	$p_0 q_1$
	p_0	q_0	p_1	q_1				
A	2	10	2	5	20	20	10	10
B	2	5	x	2	10	$5x$	$2x$	4
Total					30	$20+5x$	$10+2x$	14

$$\sum p_0 q_0 = 30, \sum p_0 q_1 = 14, \sum p_1 q_0 = 20 + 5x, \sum p_1 q_1 = 10 + 2x,$$

Given that

$$P_{01}(L) = P_{01}(P)$$

$$\frac{\sum p_1 q_0}{\sum p_0 q_0} \times 100 = \frac{\sum p_1 q_1}{\sum p_0 q_1} \times 100$$

$$\frac{\square}{30} \times 100 = \frac{10 + 2x}{\square} \times 100$$

$$280 + \boxed{} = 300 + 60x$$

$$x = \boxed{}$$



PRAHLADRAI DALMIA LIONS COLLEGE OF COMMERCE & ECONOMICS
Sunder Nagar, S.V. Road Malad (w), Mumbai 400064
ISO 9001:2015 Certified

Day-----03 SEAT NUMBER

--	--	--	--	--	--	--	--

2022	X	12	1300	(E)
BOOK KEEPING & ACCOUNTANCY (50)				
TIME: 2.30 Hrs.		(3 Pages)		Max. Marks: 50

Q.1 Answer the following as directed: [16]

A) Do you agree or Disagree with the following statements: (04)

1. Revaluation Account is also known as Profit and Loss Adjustment Account.
2. Current Account always shows a debit balance.
3. Receipts and payments Account contains the transactions relating to current year only.
4. Gain Ratio is calculated at the time of admission of a partner.

B) Answer the following questions in one sentence each: (04)

1. To which Account Surplus or Deficit is transferred?
2. What is Sacrifice Ratio?
3. What is meant by retirement of partner?
4. What is Partnership Deed?

C) Select the most appropriate answer from the alternatives given below & rewrite the sentences: (04)

1. When there is no partnership agreement amongst the partners, the division of profits take place in _____ ratio.
(a) equal (b) capital (c) Initial contribution (d) Experience and tenure of partners
2. Donation for Scholarship fund is _____.
(a) Capital Receipt (b) Revenue Receipt (c) Capital expenditure (d) Revenue expenditure
3. In the absence of partnership deed, interest on loan advanced by the partner to the firm is allowed @ _____%.
(a) 5% (b) 6% (c) 10% (d) 9%
4. Subscription received in advance during the accounting year is _____.
(a) an income (b) an expense (c) an asset (d) a liability

D) Calculate the following: (04)

1. Book value of the patents is ₹50,000, write them off by 2.5%, what will be the revalued amount of patents?
2. Seema and Hema are partners sharing profits and losses in the ratio of 3:2. Neema is admitted for $\frac{2}{5}$ th share in future profit. Calculate new ratio of Seema, Hema and Neema.
3. Given the amount of capital Employed is ₹50,000, with Normal rate of Return at 8%, Calculate the amount of Normal Profit.
4. Calculate the amount of Expenditure if Income is ₹18,000 and Surplus is ₹14,000.



PRAHLADRAI DALMIA LIONS COLLEGE OF COMMERCE & ECONOMICS
Sunder Nagar, S.V. Road Malad (w), Mumbai 400064
ISO 9001:2015 Certified

Day-----03 SEAT NUMBER

--	--	--	--	--	--	--	--

2022	X	12	1300	(E)
BOOK KEEPING & ACCOUNTANCY (50)				
TIME: 2.30 Hrs.		(3 Pages)		Max. Marks: 50

Q.1 Answer the following as directed:

[16]

A) Do you agree or Disagree with the following statements:

(04)

1. Revaluation Account is also known as Profit and Loss Adjustment Account.
2. Current Account always shows a debit balance.
3. Receipts and payments Account contains the transactions relating to current year only.
4. Gain Ratio is calculated at the time of admission of a partner.

B) Answer the following questions in one sentence each:

(04)

1. To which Account Surplus or Deficit is transferred?
2. What is Sacrifice Ratio?
3. What is meant by retirement of partner?
4. What is Partnership Deed?

C) Select the most appropriate answer from the alternatives given below & rewrite the sentences: (04)

1. When there is no partnership agreement amongst the partners, the division of profits take place in _____ ratio
(a) equal (b) capital (c) Initial contribution (d) Experience and tenure of partners
2. Donation for Scholarship fund is _____.
(a) Capital Receipt (b) Revenue Receipt (c) Capital expenditure (d) Revenue expenditure
3. In the absence of partnership deed, interest on loan advanced by the partner to the firm is allowed @ _____ %.
(a) 5% (b) 6% (c) 10% (d) 9%
4. Subscription received in advance during the accounting year is _____.
(a) an income (b) an expense (c) an asset (d) a liability

D) Calculate the following:

(04)

1. Book value of the patents is ₹50,000, write them off by 2.5%, what will be the revalued amount of patents?
2. Seema and Hema are partners sharing profits and losses in the ratio of 3:2. Neema is admitted for $\frac{2}{5}$ th share in future profit. Calculate new ratio of Seema, Hema and Neema.
3. Given the amount of capital Employed is ₹50,000, with Normal rate of Return at 8%, Calculate the amount of Normal Profit.
4. Calculate the amount of Expenditure if Income is ₹18,000 and Surplus is ₹14,000.

Balance and Adjustments, prepare Trading and Profit and Loss account.
Balance Sheet as on that date:

[12]

Trial Balance as on 31 st March, 2022		
Particulars	Debit (₹)	Credit (₹)
Purchases	98,000	
Copyright	4,000	
Provident Fund Investment	10,000	
Stock as on 01.04.2021	35,000	40,000
Capitals: Satish		50,000
Kavish	1,750	
Printing & Stationery		7,000
Provident Fund	35,000	
Sundry Debtors	1,00,000	
Machinery (Purchased on 1-1-2022)		45,000
Creditors		1,70,000
Sales		1,500
Returns	8,000	
Cash	23,200	
Provident Fund Contribution	800	
R.D.D.		250
Interest on Provident Fund Investment		2,000
Total	3,15,750	3,15,750

Adjustments:

1. Closing stock is valued at cost ₹ 15,000 and market price ₹ 18,000.
2. Prepaid Printing & Stationery is ₹250.
3. Create Reserve for Bad and Doubtful Debt @ 5% on Debtors.
4. Depreciate Machinery @ 10% p.a.
5. Interest on Capital is to be provided at 5% p.a.
6. Outstanding wages were ₹1,000.

Q.3 From the following Balance Sheet & Receipts and Payments A/c of Kundan Sports Club, Pune Prepare Income and Expenditure A/c for the year ended 31st March, 2022 and Balance Sheet as on that date.

[12]

Balance Sheet as on 1 st April, 2021			
Liabilities	Amount (₹)	Assets	Amount (₹)
Capital Fund	9,00,000	Playground	7,95,000
Outstanding Salary	10,000	Furniture	40,000
Subscription received in advance for the year 2021-22	9,000	Stock of Sports Material	44,000
		Outstanding Locker Rent	20,000
		Cash at Bank	20,000
	9,19,000		9,19,000

Dr. Receipts and Payments Account for the year ended 31st March, 2022

Cr.

Receipts	Amount (₹)	Payments	Amount (₹)
To Balance b/d		By Salaries	87,000
Cash at Bank	20,000	By Purchase of Furniture	10,000
To Admission Fees	13,000	By Sports Material Purchased	52,000
To Subscription	1,00,000		
To Life Membership Fees	3,000	By Cricket Tournament Expenses	1,32,600
To Locker Rent	24,000	By Balance c/d	
(Including ₹18,000 for the last year)		Cash	20,000
To Donations for Building Fund	50,000	Bank	22,200
To Cricket Tournament Receipts	1,01,800		
To Sale of Furniture	12,000		
(Book Value ₹20,000)			
	3,23,800		3,23,800

Additional Information:

1. Stock of Sports material in hand on 31st March, 2022 was 48,000.
2. Subscription received during the year includes ₹10,000 2022-23 and outstanding subscription for the year 2021-22 is ₹ 20,000.
3. 50% of Admission fees is to be Capitalised.
4. Current year's outstanding locker rent is ₹ 30,00.

Q.4 Sushmita and Anita are partners sharing profits and losses equally. Their Balance sheet as on 31st March, 2022 stood as follows:

[10]

Balance Sheet as on 31st March, 2022

Liabilities	Amount (₹)	Amount (₹)	Assets	Amount (₹)	Amount (₹)
Capital A/cs:			Computer		40,000
Sushmita	50,000		Stock of Goods		42,000
Anita	40,000	90,000	Debtors		30,000
Sundry Creditors		40,000	Bills Receivable		8,000
Bills Payable		25,000	Cash in Hand		25,000
			Profit & Loss A/c		10,000
		1,55,000			1,55,000

On 1st April, 2022, they admitted Rachita as a partner on the following terms:

1. The new profit-sharing ratio will be 2:2:1.
2. Rachita shall bring in cash ₹ 20,000 as her capital and ₹ 40,000 as her share of Goodwill.
3. 50% of the amount of goodwill to be withdrawn by partners.
4. Computer is overvalued by ₹ 25% in the books and Stock to be undervalued by 10%.
5. Create a provision of 5% on debtors (in view of likely bad debts).
6. The Capital of the partners to be adjusted in their new profit-sharing ratio by making adjustment through Cash Account.

Prepare: (1) Revaluation A/c (2) Partner's Capital A/c (3) Balance Sheet of the new firm

OR

Q.4 A, B and C were partners sharing profits and losses in the ratio at 5: 3: 2. Their Balance Sheet as on 31st March, 2022 is as below:

[10]

Balance Sheet as on 31st March, 2022

Liabilities	Amount (₹)	Assets	Amount (₹)
Capital A/cs:		Land & Building	1,00,000
A	20,000	Furniture	30,000
B	1,50,000	Debtors	1,00,000
C	1,00,000	Less: R.D.D.	10,000
Reserve Fund	8,000		90,000
Sundry Creditors	20,000	Goodwill	65,600
Loans	28,800	Cash at Bank	41,200
	3,26,800		3,26,800

On 1st April, 2022, C retired from the firm on the following terms:

1. A's & B's share in the reserve to be continued in the new firm.
2. R.D.D. is to be increased upto ₹ 12,000.
3. Land & building to be appreciated by ₹ 10,000.
4. Furniture is reduced to ₹ 20,000.
5. Goodwill of the firm is revalued at ₹ 70,000.
6. Creditors were repaid at a discount of 5%.
7. Amount payable to C is to be transferred to his Loan A/c.

Give journal entries in the books of the firm



PRAHLADRAI DALMIA LIONS COLLEGE OF COMMERCE & ECONOMICS

Sunder Nagar, S.V. Road Malad (w), Mumbai 400064

ISO 9001:2015 Certified

Day-----04 SEAT NUMBER

--	--	--	--	--	--	--	--

2022	X	13	1300	(E)
SECRETARIAL PRACTICE (52)				
TIME: 2.30 Hrs.		(2 Pages)		Max. Marks: 50

Q.1 (A) Answer in one sentence.

(5)

1. What is private placement ?
2. What is the subsequent issue after IPO called as ?
3. What is a share certificate ?
4. Name the document which is an agreement between the deposit trustee and company.
5. What is production cycle ?

(B) Write a word or a term or a phrase which can substitute each of the following statements. (5)

1. The decision of finance manager which ensures that firm is well capitalised.
2. A Dollar denominated instrument traded in USA.
3. Highest bid price in Book Building method.
4. Type of resolution needed to issue convertible debentures.
5. Maximum tenure of a deposit.

(C) Select the correct answer from the options given below and rewrite the statements. (4)

1. A _____ Company can accept deposits from public not exceeding 35% of its paid-up share Capital and free reserves.

a) Government b) Private c) Eligible Public

2. Dividend is recommended by _____.

a) Board of Directors b) shareholders c) Depositors

3. _____ are the creditors of the company.

a) Shareholders b) Debentureholders c) Directors

4. Letter of _____ is sent to applicants who have been given shares by the company.

a) Regret b) Renunciation c) Allotment

Q.2 Explain the following terms / concepts. (Any 2 out of 4) (4)

1. Charge on Assets.
2. Redeemable Preference Shares.
3. Authorised Capital.
4. Corporate Finance

(8)

Q.3 Distinguish between the following. (Any 2 out of 3)

1. Fixed Capital & Working Capital.
2. Rights Shares & Bonus Shares.
3. Transfer Of Shares & Transmission Of Shares.

(8)

Q.4 Answer in brief. (Any 2 out of 3)

1. Draft a letter of allotment to debentureholder.
2. Write a letter to the member for the issue of Share Certificate.
3. State any four provisions of Companies Act 2013 for issue of debentures.

(8)

Q.5 Justify the following statements. (Any 2 out of 3)

1. All companies cannot accept deposits from public.
2. Debenture trustees is appointed by a company issuing debentures.
3. There are various factors affecting the requirement of fixed capital.

(8)

Q.6 Answer the following questions. (Any 1 out of 2)

1. What is an equity share? Explain its features.
2. Explain the statutory provisions for allotment of shares.



PRAHLADRAI DALMIA LIONS COLLEGE OF COMMERCE & ECONOMICS
Sunder Nagar, S.V. Road Malad (w), Mumbai 400064
ISO 9001:2015 Certified

Day-----02

SEAT NUMBER

--	--	--	--	--	--	--	--

2022	X	11	1300	(E)
INFORMATION TECHNOLOGY(99)				
TIME: 2.30 Hrs.		(2 Pages)		Max. Marks: 50

Q1. Fill in the Blanks

5 marks

1. <Input type="_____ "> defines range control.
2. _____ attribute act as a temporary label showing the purpose of a text field without requiring a label tag.
3. The _____ reads the content and think the website is original one and it ranks the page.
4. All financial entries are made using _____ or account heads.
5. A _____ is the series of exchanges between a customer and supplier that take place when a commercial exchange is executed.

Q2. State True or False

5 marks

1. G2C stands for Government to Customer.
2. HSN stands for Harmonized System of Nomenclature.
3. Googlebot is the process of adding web pages into Google search.
4. The <iframe> tag creates an inline frame.
5. A given <map> tag can contain multiple <area> tag within it.

Q3. Fill in the blanks (One correct answer)

5 marks

1. _____ attribute defines the URL to which the clickable regions within the map.
a. href b. height c . src d. preload
2. The _____ tag is used to specify multiple media resources for media elements.
a. <audio> b. <video> c .<source> d.<map>
3. _____ file is tells the search engines which page to access and index on your website and which not.
a. batch.txt b. googlebot.txt c . Robots.txt d.search.txt
- 4 IGST stands for _____
a. Internal Goods and Service Tax b. Indian Goods and Service Tax
c. Integrated Goods and Service Tax d. International Goods and Service Tax
5. _____ provides online facilities to the employees like applying for leave, checking the balance of holidays.
a. Government to Business b. Government to Employee
c. Government to Government d. Government to Customer



PRAHLADRAI DALMIA LIONS COLLEGE OF COMMERCE & ECONOMICS

Sunder Nagar, S.V. Road Malad (w), Mumbai 400064

ISO 9001:2015 Certified

Day-----02

SEAT NUMBER

--	--	--	--	--	--	--	--

2022	X	11	1300	(E)
FRENCH (13)				
TIME: 2.30 Hrs.		(2 Pages)		Max. Marks: 50

Q1) Répondez en Français –

8 (4 choix de 6)

1. Que faites-vous quand vous êtes fatigué ?
2. Les Français, que prennent-ils au petit-déjeuner?
3. Pourquoi faut-il agir ensemble pour sauver notre planète ?
4. Décrivez la Tour Eiffel (deux aspects)
5. Quel temps fait-il au printemps en France?
6. Qu'est-ce qu'un repas équilibré ?

Q2) Grammaire –

A. Choisissez le temps correct du verbe –

10

1. Nous _____ samedi pour le concert. (Venir - passé composé)
2. Le train de Lyon _____, il y a deux minutes. (partir - Passé Récent)
3. _____ la rue à droite, Monsieur. (prendre - Impératif)
4. Le bus de touristes _____ dans quelques instants. (arriver - Futur Proche)
5. Ma mère _____ la cuisine quand je suis rentré chez moi. (Faire - Imparfait)

B. Faites comme indique –

6

1. Je prends _____ déjeuner dans la cafétéria du lycée. (Possessif adjectif)
2. _____ variété ! C'est difficile de choisir. (Interrogatif adjectif)
3. J'ai un rendez-vous important _____ semaine. (Demonstratif adjectif)
4. Elle m'a expliqué le problème _____. (sérieux - Adverbe)
5. Je suis fatigué, je me repose a la maison. Je _____ vais _____. (Mettez au négatif)
6. Contraire - a. Chaud b. Propre

C. Choisissez les pronoms corrects pour les mots soulignés –

10

1. André, il trouve la géographie intéressante.
2. Nous allons au marché ce soir.
3. Nicas va goûter les plats français.
4. Les parents de Robert partent pour Nice.
5. Parlons au directeur de l'Institut.

D. Choisissez le bon Articles –

2

1. Il ne boit pas _____ vin l'après-midi.
2. Si vous avez mal _____ dents, Allez chez le dentiste.

E. Choisissez la bonne préposition –

2

1. Je pense voir un film _____ mes Amis.
2. On sert une variété de fromages _____ un plateau.

F. Choisissez les bons phrases au comparatif –

1

1. Le Kabaddi (populaire) le foot.

G. Choisissez les bons phrases au superlatif –

1

1. Molière - grand écrivain - France

3

Q3) Traduisez en Français -

1. Every weekend, they used to go to the countryside.
2. At what time do you go to the gym?
3. She returned home late after dinner.

P.T.O

Q4) Traduisez en anglais -

Si on ouvre le journal, on y trouve beaucoup d'information de ce qu'il faut faire ou ne pas faire pour avoir une bonne santé physique et mentale. Sur WhatsApp il y a toujours des conseils de santé . Tout cela mène à une Grande confusion.

Q5) Blog ou Email -

Nikhil Bose, un jeune indien travaille en France. Il a passé un week-end à Paris avec ses amis. Il écrit un blog sur le sujet suivant :

<< Un week-end à Paris »

(visiter les endroits touristiques, les moyens de transport, manger au restaurant, acheter des souvenirs..... etc.)

Ou

M. Gide (gide 1956@orange.fr) envoie un courriel à son petit-fils Ron (rongide@hotmail.com) un garçon de dix ans. pour expliquer comment rester en bonne santé.

(la discipline dans la vie quotidienne, les sports, les repas équilibrés.....etc.)
