

EMPLOYER FEEDBACK ANALYSIS 2018-19

Feedback 1. Overall Evaluation of Programme and Curriculum

‘Overall feedback of Programme and Curriculum was recorded. Employers were asked to rate on the basis of each of the following parameters on the satisfaction level.

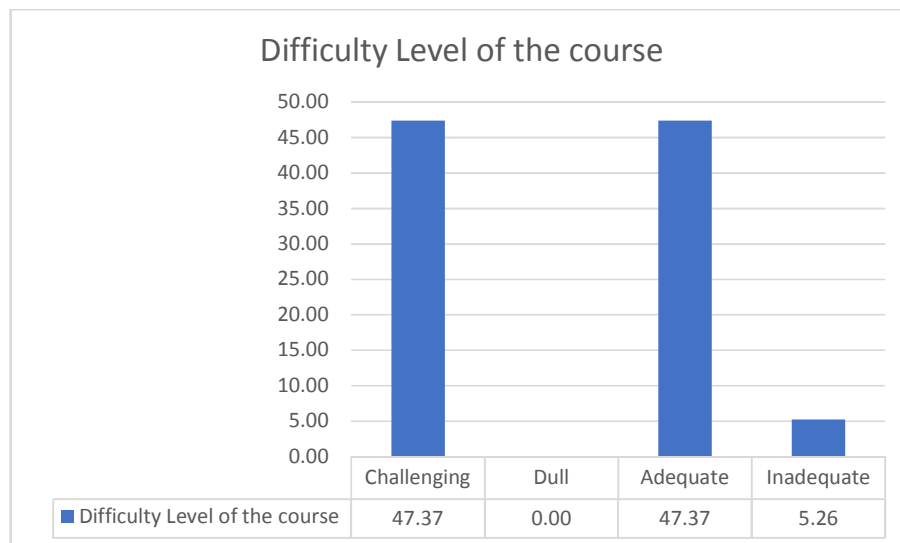
1. Difficulty Level of the course
2. Balance between Practical and Theory
3. Useful in imparting transferable and life skills
4. Contribute towards inculcating of ethics, values and moral sense
5. Employability enhancing content
6. Simulating extra learning and self-learning
7. Usefulness for internal assessment

Following is a graphical representation of the ratings accorded by the respondents:

1. Difficulty Level of the course

19 Respondents’ response was analyzed and the data emerged as under:

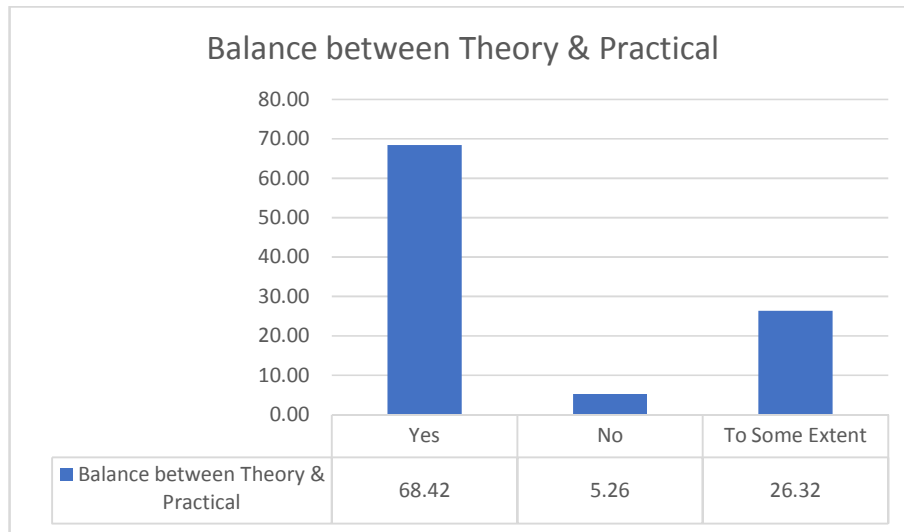
47.37% of Respondents asserted that the syllabus was Challenging while 0% indicated that it was dull, 47.37% found it was Adequate and 5.26% said it is Inadequate.



2. Balance between Practical and Theory

19 Respondents’ response was analyzed and the data emerged as under:

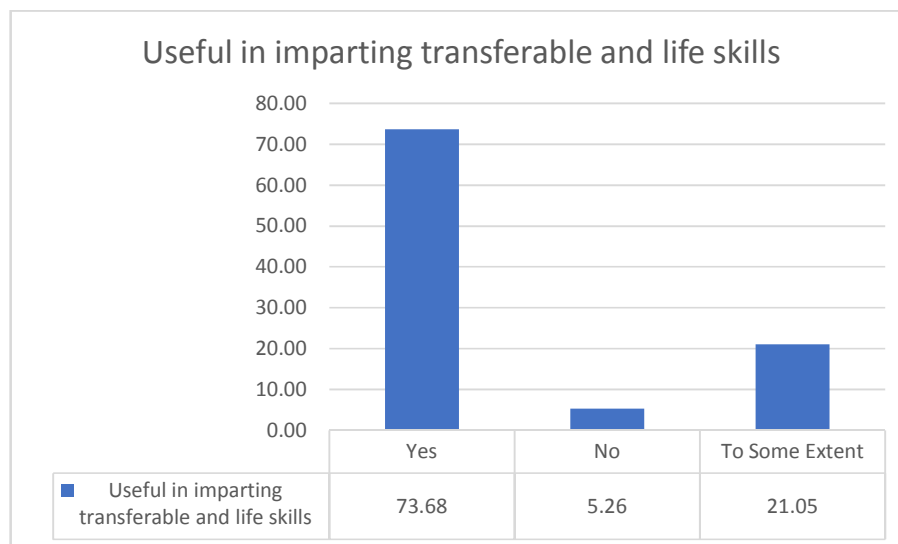
68.42 % of Respondents asserted that the balance between Practical and Theory while 5.26% indicated that there was no balance between practical and theory 26.32% said the balance was there to some extent.



3. Useful in imparting transferable and life skills

19 Respondents' response was analyzed and the data emerged as under:

73.68% of Respondents asserted that the syllabus was useful in imparting transferable and life skills while 5.26 % indicated that it was not, 21.05% found it was up to some extent.



4. Contribute towards inculcating of ethics, values and moral sense

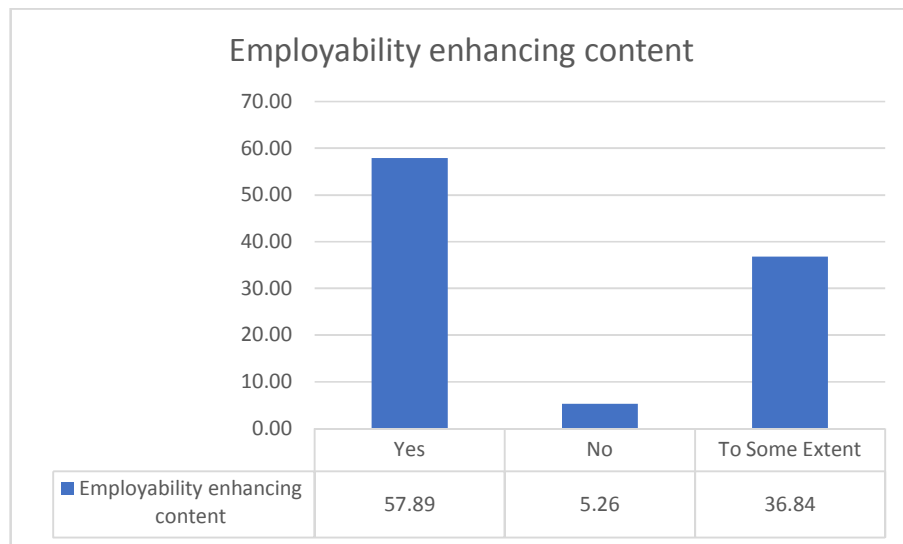
19 Respondents' response was analyzed and the data emerged as under:

73.68% of Respondents asserted that the syllabus was contributing towards inculcating of ethics, values and moral sense while 0% indicated that it was not, 26.32 % found it was up to some extent.



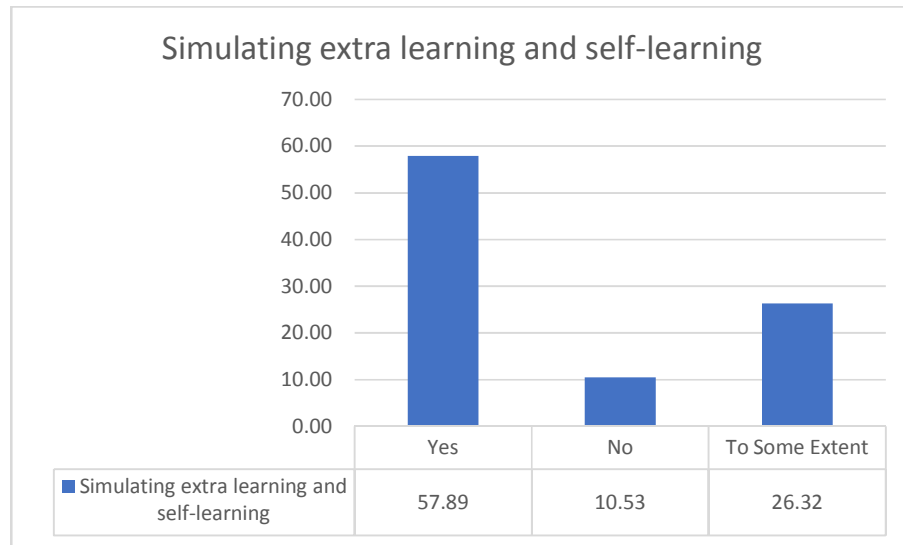
5. Employability enhancing content

19 Respondents' response was analyzed and the data emerged as under:
 57.89% of Respondents asserted that the syllabus has Employability enhancing content while 5.26% indicated that it was not, 36.84% found it was up to some extent.



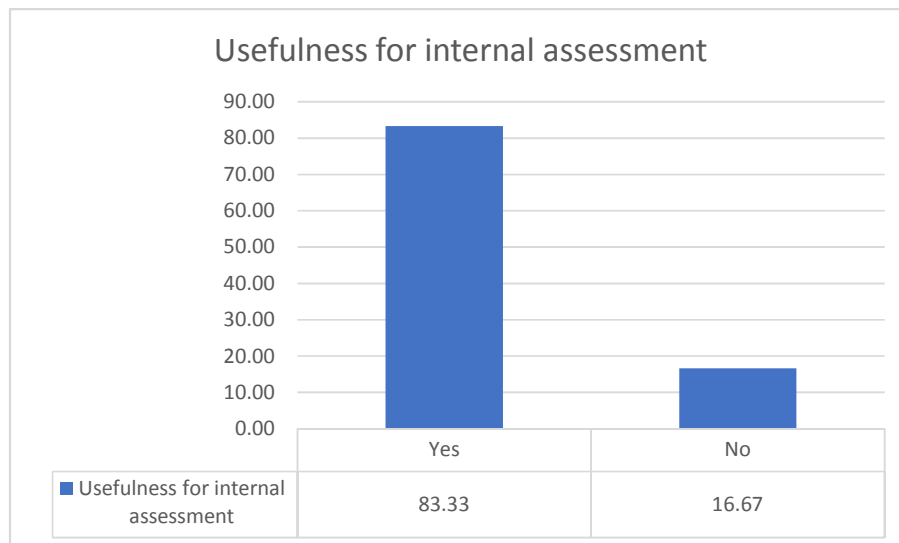
6. Simulating extra learning and self-learning

19 Respondents' response was analyzed and the data emerged as under:
 57.89% of Respondents asserted that the syllabus has simulated extra learning and self-learning in students while 10.53% indicated that it was not, 26.32% found it was up to some extent.



7. Usefulness for internal assessment

6 Respondents' response was analyzed and the data emerged as under:
 83.33% of Respondents asserted that their internal assessment is useful while 16.67% indicated that it is not.



Feedback 2.

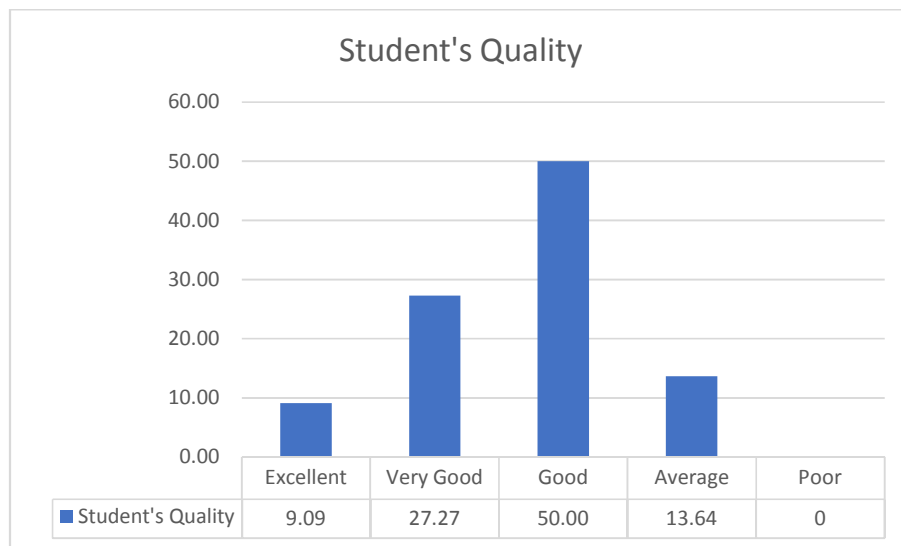
Another set of feedback was taken on the placement experience of the employers. Employers were asked to rate each of the following parameters on the satisfaction level.

- Student's Quality
- Discipline among the students
- Punctuality of the students
- Knowledge of the Students

1. Student's Quality

22 Respondents' response was analyzed and the data emerged as under:

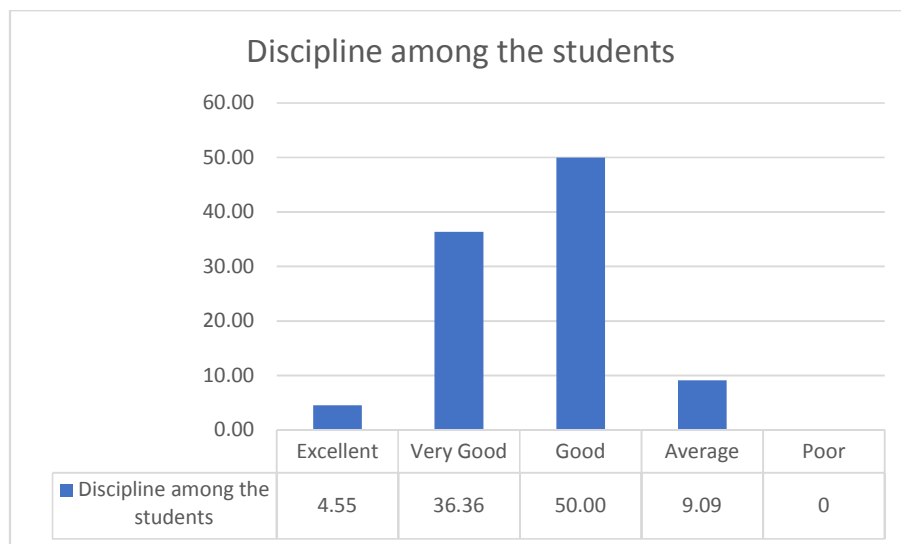
9.09% of Respondents asserted that students are of excellent quality while 27.27 % indicated that students are very good. 50 % assess students as good. 13.64 % thought that students were average.



2. Discipline among the students

22 Respondents' response was analyzed and the data emerged as under:

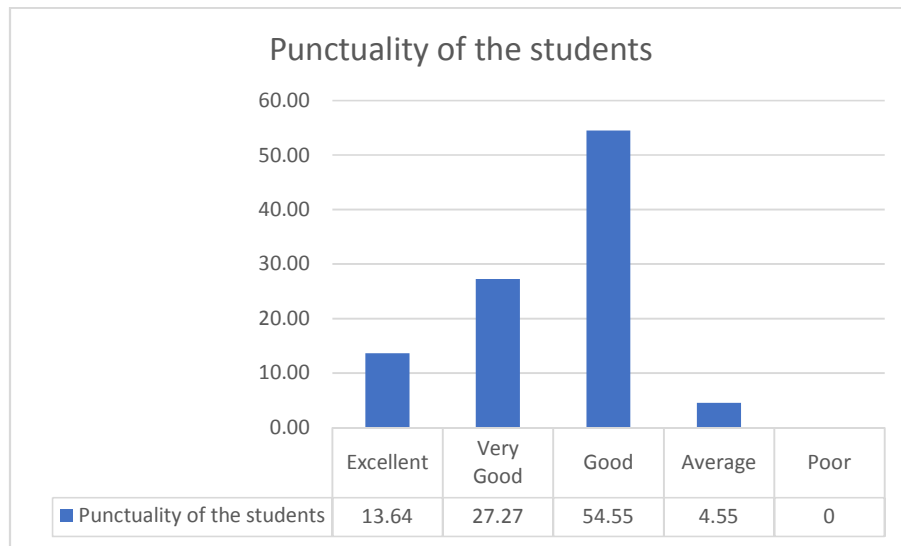
4.55% of Respondents asserted that discipline among the students is of excellent while 36.36 % indicated that it is very good. 50 % assess that discipline amongst students is good. 9.09 % thought it was average.



3. Punctuality of the students

22 Respondents' response was analyzed and the data emerged as under:

13.64% of Respondents asserted that punctuality among the students is of excellent while 36.36 % indicated that it is very good. 50 % assess that punctuality among students is good. 9.09 % thought it was average.



4. Knowledge level of the students

21 Respondents' response was analyzed and the data emerged as under:

42.86 % indicated that knowledge of the students is very good while 38.10 % assess that students' knowledge is good. 19.05 % thought it was average.

